

22 January 2026



Dear parents, caregivers and students,

Happy new year and welcome back to our returning families, and a very warm welcome to our new students and families beginning their time with us.

We welcome eight new staff to Sancta Maria College this year:

Barry Lee	Music and Maths
Rosy D'Souza	RE and ESOL
Anthony Hart	Social Science
Victoria Fisher	Teacher Aide
Julia Kubala	Social Science
Hannah Barnett	Teacher Aide
Flynn Cook	Teacher Trainee: PE
Riya Rajeesh	Teacher Trainee: Biology

I am also starting my time with Sancta Maria College, and I am excited about leading this faith-filled Catholic school.

I have been in education for over 25 years, working in a range of schools both in New Zealand and overseas. It is a privilege to lead this College, and I look forward to meeting students, parents, and the community in the coming weeks.

Our Catholic charism of faith being our compass is inspired by Bishop Pompallier's desire to spread the good news around Aotearoa / New Zealand in the 1800s. He, like us, took his inspiration from Mary and her deep faith. Mary is a wonderful role model and inspiration to our community in her unwavering faith in God and her willingness to say 'yes' to God and his plans for her. There are so many positive opportunities at Sancta Maria College that our students can say 'yes' to; I encourage them to do this in all aspects of their school life: faith, academia, co-curricular, and their pastoral interactions with each other and their community. Young people flourish when they give their best and fully involve themselves in their school community.

Our young people need to regularly attend school and be free from distractions to focus on their learning and participation, and to take advantage of the opportunities we offer here at Sancta Maria College. We appreciate your support in helping us make Sancta Maria College a positive and caring learning environment for all our students. More detailed information about our expectations on attendance, uniform, and phone use is in the information below.

Information regarding the start of the year is also attached below.

Monday 26 January 2026	Auckland Anniversary Day – public holiday
Tuesday 27 January	Staff Only Day – no students to attend school
Wednesday 28 January	Staff Only Day – no students to attend school
Thursday 29 January	Year 7 Induction Day: 8.45am – 2:00pm activities and orientation Year 7 must attend in full school uniform Transition Day for new 8-13 students 9.30am-11.00am (full school uniform) Year 12-13 Course Confirmation (Auditorium). Year 12: 10.00am Year 13: 11.30am <i>Uniform not required for seniors this day</i> Tuckshop closed School Office opens today BUSES will NOT be operating
Friday 30 January	Years 7–10 students attend school: 8:45am – 2:00pm Students must attend in full school uniform International students' orientation Tuckshop closed BUSES will NOT be operating
Monday 2 February	Full school attendance for ALL Year levels: 8:45am – 3:15pm Students must attend in full school uniform Whole school mihi whakatau BUSES will be operating TUCK SHOP reopens
Tuesday 3 February	Full school attendance for ALL Year levels: 8:45am – 3:15pm Students must attend in full school uniform Year 12 RYDA P1-4 (Auditorium) BUSES will be operating
Wednesday 4 February	Full school attendance for ALL Year levels: 8.45am – 3:15pm Students must attend in full school uniform BUSES will be operating
Thursday 5 February	Full school attendance for ALL Year levels: 9:30am – 3:15pm Students must attend in full school uniform BUSES will be operating
Friday 6 February	Waitangi Day – public holiday

Year 7 students and those new to the school will receive detailed information via email tomorrow from our Deputy Principal, Mrs Lal.

Senior students' NCEA results were recently released. I know there will be plenty of very happy and proud students, and parents, enjoying the fruits of their hard work. The University Entrance pass rate of 90% was particularly pleasing – well done. We will celebrate NCEA examination success once the Scholarship results are released later in February.

Welcome once again and best wishes for the year ahead.

With faith as our compass.

Nga mihi

Andrew Mackenzie
Principal

SLT Messages:

Pastoral Structures

Attendance

When young people attend school regularly, they stay up to date with their learning and their academic development. Just as importantly, they stay connected to their friends, develop resilience, and feel that they belong. Missing too much school makes it harder to catch up, both academically and socially.

The Ministry of Education defines “regular attendance” as being at school more than **90% of the time**. That means missing no more than five days in a term.

Missing just one day every two weeks adds up to four weeks away from learning over the year. Over time, those missed days really affect a young person’s learning progression and social development.

Use of Cell Phones

A reminder that phone use is not permitted between the hours of 8.40am and 3.15pm. Phones are a major distraction for students and social media has many negative impacts on student wellbeing. **Phones must be in bags, not in pockets.** If students are caught using their mobile device, it will be confiscated and cannot be collected until 3.15pm from the Student Centre. Students will receive an after-school detention for cell phone use.

Uniform Expectations

As we prepare for the 2026 school year, we appreciate your support in helping all students begin the year well-presented and confident. A consistent uniform standard reflects the pride we take in our school community and supports a positive learning environment. Full uniform guidelines can be found on our website: <https://www.sanctamaria.school.nz/uniform/>, Below are some key reminders.

JUNIOR UNIFORM

Girls

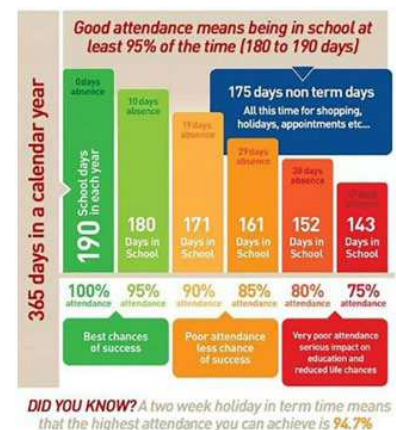
- Skirts must be **at minimum at their kneecap**. Please allow for growth when purchasing new items.
- Skirts should be **comfortably fitted**, not tight.

Boys

- Please ensure shirts allow for growth so they can be worn neatly throughout the year.
- Shirts must be **always tucked in**.
- Socks must be always worn up.

Footwear (Term 1)

- Junior students may wear sandals in Term 1.
- Acceptable styles are **McKinlay, Safari black**, or **black Roman sandals** only.
- No other sandal styles are permitted.



SENIOR UNIFORM

Girls

- Skirts must be worn **below the knee cap**.
- Skirts must be **comfortable and appropriately fitted**, not tight.
- Similarly for the girls shirts/blouse, must be comfortably fitting.

Boys

- Shirts are expected to be always tucked in.
- Senior boys are expected to be **clean shaven** each day. Senior boys arriving to school unshaven, will be expected to shave at school. The cost of the disposable blades will be charged to their accounts.

Jewellery and Grooming (All Students)

- Students may wear **one small stud earring per ear**, worn on the ear lobe and nowhere else. The stud should cover only a small part of the earlobe to avoid the risk of catching on clothing.
- Hair colour must be a **natural-looking shade**. No streaks, two-tone colouring, or unnatural colours. Hair must be neatly presented, tied up and of the face.
- Boys should keep their hair **short and neat**, but not shorter than 2cm.
- No extreme hairstyles (e.g. shaved head, shaved patterns, undercut, dreadlocks, mohawks) etc.

NB: ALL Senior students are expected to have a blazer and tie for formal assemblies and occasions.

Thank you for your continued support in upholding our uniform expectations. Your partnership ensures that students arrive at school ready to learn and represent our community with pride.

Navigation

Navigation is a subject area which builds on our charism and reflects our school motto, "Faith is our compass". It provides each student with a Kaiurungi (tutor teacher) who helps them to navigate their journey through the College, assisting them with goal-setting and academic tracking whilst also delivering a life skills curriculum programme, as well as focusing on supporting our students' Hauora/wellbeing and enhancing our Special Character through service.

Students meet with their Kaiurungi twice a week for *Navigation*.

Students are grouped in their houses (Akaroa, Hokianga, Kororāreka and Waitematā), with junior groups being Year 7-10 and senior groups Year 11-13.

Each house is led by a junior and a senior Kaihautū:

Junior Kaihautū (Years 7-10):

Akaroa – Jamahl Farrar (J.Farrar@sanctamaria.school.nz)

Hokianga – Andrea Begunk (a.begunk@sanctamaria.school.nz)

Kororāreka – Callum MacLeod (c.macleod@sanctamaria.school.nz)

Waitematā – Tilly Curham (t.curham@sanctamaria.school.nz)

Senior Kaihautū (Years 11-13):

Akaroa – Richard Campbell (r.campbell@sanctamaria.school.nz)

Hokianga – Kieran Gutry (k.gutry@sanctamaria.school.nz)

Kororāreka – Makayla Samaeli (m.samaeli@sanctamaria.school.nz)

Waitematā – Ash Bali (a.bali@sanctamaria.school.nz)

2026 Timetable

Mon	Tues	Wed	Thurs	Fri
Staff meeting	Staff meeting	Staff meeting	Late Start (Staff Professional Learning)	Staff meeting
Homeroom 8.45-9.00	Assembly 8.45-9.15	Homeroom 8.45-9.00		Homeroom 8.45-9.00
Period 1 9.00 - 10.00	Period 1 9.15-10.15	Period 1 9.00 - 10.00	Period 1 9.30 - 10.30	Period 1 9.00 - 10.00
Period 2 10.00 - 11.00	Navigation 10.15-11.00	Period 2 10.00 - 11.00	Navigation 10.30-11.00	Period 2 10.00 - 11.00
Interval 11.00 - 11.25	Interval 11.00 - 11.25	Interval 11.00 - 11.25	Interval 11.00 - 11.25	Interval 11.00 - 11.25
Period 3 11.30 - 12.30	Period 3 11.30 - 12.30	Period 3 11.30 - 12.30	Period 3 11.30 - 12.30	Period 3 11.30 - 12.30
Period 4 12.30 - 1.30	Period 4 12.30 - 1.30	Period 4 12.30 - 1.30	Period 4 12.30 - 1.30	Period 4 12.30 - 1.30
Lunch 1.30 - 2.10	Lunch 1.30 - 2.10	Lunch 1.30 - 2.10	Lunch 1.30 - 2.10	Lunch 1.30 - 2.10
Period 5 2.15-3.15	Period 5 2.15-3.15	Period 5 2.15-3.15	Period 5 2.15-3.15	Period 5 2.15-3.15

All students are to be at school by **8.40am** ready to attend Homeroom or Full School Assembly at 8.45am. A further communication will be sent regarding Late Start Thursdays, which commence on 5 February.

Start of Year Schedule

The start of year schedule can be found at the beginning of this letter. It has also been published on the website and official school social media. Do take note of staggered start dates and bus schedules. You may contact the relevant Kaihautū should you have any questions or concerns regarding the start of year schedule.

Class and ID Photos

All Class and ID photos will be taken on **Monday, 9 February**. Students who do not meet the uniform and appearance expectations will not be included in class photos nor photographed for IDs until the issue is resolved. This will delay the issue of their Student ID. **Full and correct uniform must be worn by all students.** Formal uniform is required to be worn by ALL SENIORS Years 11, 12 and 13.

The Year 13 cohort photo will be taken on this day. All Year 13 must be in full formal uniform (refer to uniform expectations listed above).

Stationery

Please refer to information previously sent which outlined the purchase of stationery options. You may also see this information [here](#).

If you have placed a stationery order and it has not arrived by day one, just send your child to school with refill, pens and a charged device.

Year 7 and 8 students should bring all of their stationery on day one of their return. Please do not worry if this is not possible, just send your child to school with refill, pens and a charged device.

Years 9-13 need to only bring the stationery required by their timetabled classes.

Devices

All students, Year 7-13, are required to bring a device to school from the commencement of the 2026 school year. We are a BYOD school and devices are needed for learning. Information regarding purchasing a device has been provided and can also be found on our [website](#).

Contact Information and Communication

To enable the College to communicate with you effectively and efficiently it is imperative we have the correct contact details for you. Please ensure your details have been updated if you have moved house or changed phone numbers. To make changes please contact Mrs Alicia Donaldson

a.donaldson@sanctamaria.school.nz.

School Tuck Shop

The Tuck Shop will be open from Monday 2 February. Jackie continues to provide an extensive and diverse range of healthy meals, including hot subs and toasties, noodles, a variety of sandwiches, snacks, salads, pastas and drinks. There is a 'Meal of the Day' option which is available to order before school or during interval. This option changes daily - check our social media pages and Jackie's notice board for details. Please ensure students have a packed lunch and bring a water bottle prior to this date.

Eliminating Unnecessary Food Packaging

As a school, we are committed to reducing rubbish. Again, this year, we are aiming to eliminate unnecessary rubbish on our school grounds, and request that lunch boxes only contain food that is free from plastic packaging. If students do bring wrapped items in their lunch boxes, they will need to take the plastic packaging and any food waste home with them. **A reminder that there is no chewing gum allowed at school.** Thank you.

Medical

For changes to medical details, please email medical@sanctamaria.school.nz . If your child has a severe medical condition e.g. anaphylaxis, epilepsy, diabetes, severe asthma, please provide a Health Action Plan.